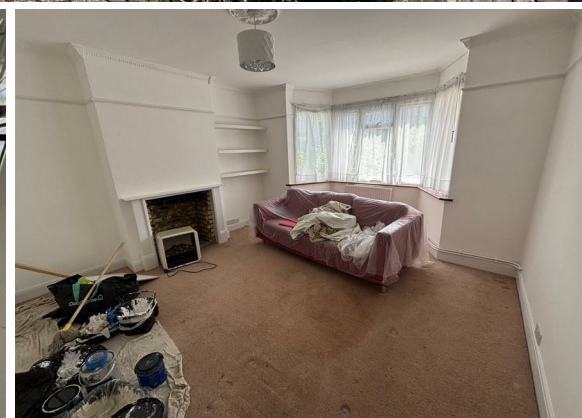




4 Bed Semi Detached House
Lawrence Road

£2,400 Per month

- 4 bedrooms
- Semi-detached house
- 2 reception room
- UPVC double glazing
- Gas central heating
- 45ft rear garden
- Off street parking
- Unfurnished
- Easy transport links
- Viewing recommended



Lawrence Road
South Norwood
SE25 5AA

Situated on Lawrence Road in the vibrant city of London, this charming house, built in 1930, offers a wonderful opportunity for families or those seeking extra space. With four well-proportioned bedrooms, this property is perfect for accommodating a growing family or providing ample room for guests. The single bathroom is conveniently located, ensuring ease of use for all residents.

The house retains a sense of character and warmth, typical of homes from its era, while also providing a blank canvas for modernisation to suit your personal taste. The location is ideal, with easy access to local amenities, schools, and transport links, making it a practical choice for daily commuting and leisure activities.

This property presents a fantastic opportunity to create a comfortable and stylish home in one of London's sought-after areas. Don't miss the chance to make this house your own.

Entrance Hall

UPVC double glazed windows to front. Radiator. Under stairs cupboard. Laminate wood flooring.

Cloakroom

UPVC double glazed windows to side. Low level WC. Wall mounted wash hand basin. Radiator. Laminate wood flooring.

Reception room

15'1 x 14'1
UPVC double glazed bay window to front. Radiator. Carpet as laid.

Reception two

14'1 x 13'1
UPVC double glazed patio doors to garden. Radiator. Laminate wood flooring.

Kitchen/breakfast room

14'8 x 10'0
UPVC double glazed windows to rear. Range of wall and base units with work surfaces over. Built-in oven, hob and extractor hood. Space for washing machine and fridge/freezer. Radiator. Cupboard housing boiler. Vinyl flooring. UPVC double glazed door to garden.

Landing

UPVC double glazed window to side. Loft access. Carpet as laid.

Bedroom One

15'5 x 14'0
UPVC double glazed bay window to front. Radiator. Carpet as laid.

Bedroom Two

14'1 x 13'1
UPVC double glazed window to rear. Radiator. Built-in cupboard. Carpet as laid.

Bedroom Three

9'0 x 8'6
UPVC double glazed windows to rear. Built-in cupboard. Radiator. Carpet as laid.

Bedroom Four

10'2 x 6'5
UPVC double glazed window to front. Radiator. Carpet as laid.

Bathroom

UPVC double glazed window to side. Shower cubicle. Panelled bath. Pedestal wash hand basin. Low level WC. Heated towel rail. Vinyl flooring.

Garden

45'
Patio area then laid to lawn. Side access.

Parking

Paved off street parking to front.

Tenure

"We are advised by the vendor(s) that the tenure is Freehold".

Authority

London Borough Of Croydon. Band E £ 3177.67







CONTACT

5 High Street
 London
 SE25 6EP

E: Info@northwoods.co.uk
 T: 020 8653 3377
northwoods.co.uk

